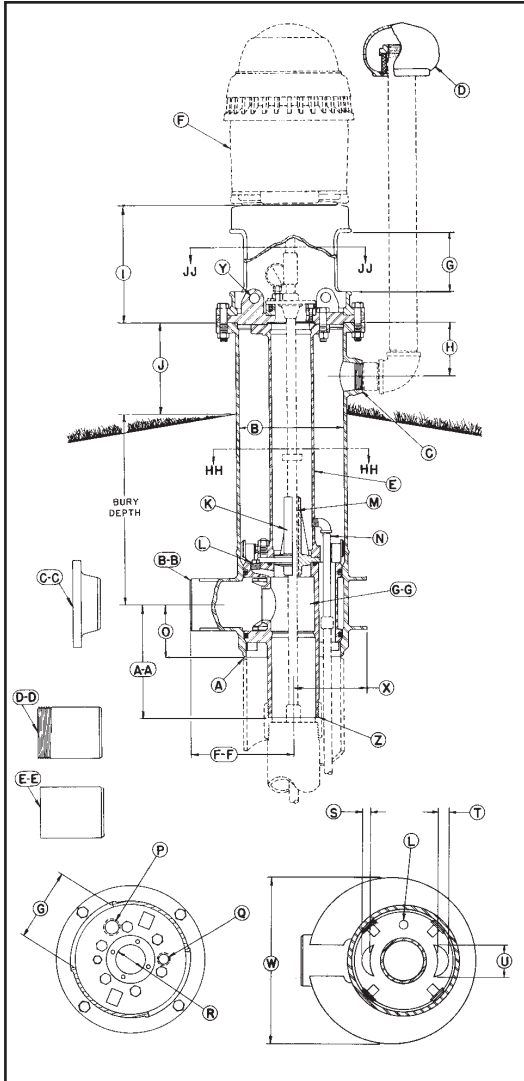




# 14" TURBINE PITLESS UNIT SPECIFICATIONS



- A Unit minimum I.D. 13-1/4 in.: chamfered for butt weld to well casing.
- B Pitless Unit with Black Upper Case Std.: 15-1/4 in. I.D., 16 in. O.D.
- C 2-1/2 in. NPT Tapping for Well Vent.
- D 2-1/2 in. Protected Screen Well Vent.
- E Lift-Out Pipe: 6 in. IPS.
- F Turbine Motor having a maximum base diameter of 16-1/2 in. *(Supplied by others)*
- G Access Openings: (2) openings measuring 9 in. wide x 8-1/2 in. high.
- H 7-1/8 in.
- I 15 in.
- J 12 in.
- K Shaft Bearing Housing.
- L Two 1 in. NPT Tappings ported to Column Pipe.
- M Shaft Bearings *(Supplied by pump manufacturer)*: Total length of bearing to be 10 in. and a maximum O.D. of 2-1/2 in.
- N 3/4 in. drain.
- O Dimension from center of Discharge Outlet to bottom of Discharge Body: 9-3/4 in.
- P 1-1/2 in. NPT Tapping for optional Water Sampler.
- Q 1 in. NPT Tapping.
- R Rabbet Fit for Upper Grease Seal Bearing Housing: Minimum O.D. of 3 in. and maximum O.D. of 4 in.; maximum Bolt Circle of Bearing Housing - 5-1/4 in. *(Bearing & Bearing Housing supplied by others)*
- S 1-1/4 in.
- T 2 in.
- U 4 in.
- W 25-7/16 in.
- X 10-15/16 in.
- Y Lifting Lug: (2) Lugs for inserting or removal of inner well parts.

**Z SPOOL TO DROP PIPE CONNECTION SIZES:** **5 in. NPT** **6 in. NPT** **8 in. NPT**  
 The Standard Spool is designed for a 120,000 lb. (3/4 Taper) (3/4 Taper) (3/4 Taper) maximum load. Spools are available to sustain higher loads.

**AA** Dimension from center of Discharge Outlet to bottom of Spool: ..... 16-3/16 in. 21-13/16 in. 15-13/16 in.

**DISCHARGE CONNECTIONS & SIZES:**

For [BB] Butt Weld (IPS):.....	5 in. I.D.	6 in. I.D.	8 in. I.D.
For [CC] Flanged (ASA Std. 150 lb.):.....	5 in. I.D.	6 in. I.D.	8 in. I.D.
For [DD] Threaded Nipple (NPT):.....	5 in. I.D.	6 in. I.D.	8 in. I.D.
For [EE] Transition Sleeve (IPS):.....	N.A.	6 in. I.D.	8 in. I.D.

**FF** Dimension from center of Well Casing to the end of Discharge Outlet.

With [BB] Butt Weld Discharge:.....	20-9/16 in.	20-9/16 in.	14-1/2 in.
With [CC] Flanged Discharge:.....	24-1/16 in.	24-1/16 in.	18-1/2 in.
With [DD] Threaded Discharge:.....	23-9/16 in.	24-9/16 in.	18-1/2 in.
With [EE] Transition Sleeve Discharge:.....	N.A.	26-9/16 in.	20-1/2 in.

**GG SPOOL ASSEMBLY \*\***

Area of Water Passage(s):.....	19.6 sq. in.	39.2 sq. in.	39.2 sq. in.
Percent Area of Water Passage(s) to Area of Drop Pipe:.....	100%	138%	78.2%

**COMPONENT MATERIALS**

- Well Vent** - cast iron, green enamel finish.
- Motor Support** - cast iron, black corrosion resistant coating.
- Combination Hold-Down & Lift-Out Mechanism** - steel, black corrosion resistant coating.
- Hold-Down Pipe** - steel, black corrosion resistant coating.
- Pitless Case** - steel, corrosion resistant coating.
- Discharge Body** - steel, lead free galvanized.
- Spool** - steel, lead free galvanized.

**NOTE:** Provision for prelubrication not available.  
**NOTE:** Units are designed for motors having an RPM of 1800 or less and a 16-1/2" base diameter having a 14-3/4" bolt circle. Maximum bury depth will be 9 feet. For units requiring exceptions to these conditions of design, special specifications must be used.

**NOTE:** Any combination between Column Pipe and Discharge Outlet size is possible, if required.

SPECIFICATIONS ARE SUBJECT TO CHANGE WITHOUT NOTICE

BB122-14(05-08)