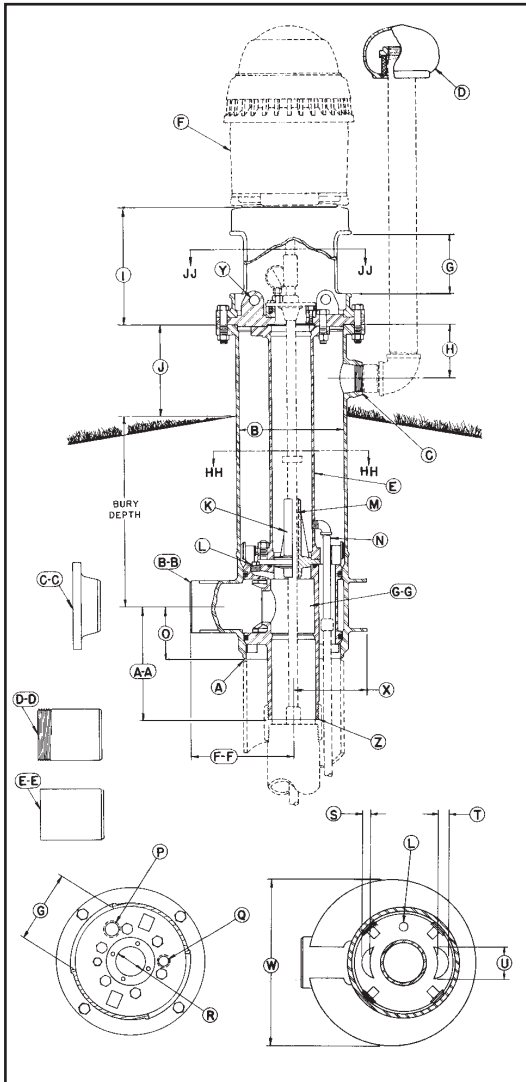




12" TURBINE PITLESS UNIT SPECIFICATIONS



- A** Unit minimum I.D. 12 in.: chamfered for butt weld to well casing.
- B** Pitless Unit with Black Upper Case Std.: 13-1/4 in. I.D., 14 in. O.D.
- C** 2-1/2 in. NPT Tapping for Well Vent.
- D** 2-1/2 in. Protected Screen Well Vent.
- E** Lift-Out Pipe: 5 in. IPS.
- F** Turbine Motor having a maximum base diameter of 12 in. (Supplied by others)
- G** Motor Mount Access Openings: (2) openings measuring 9 in. wide x 8-1/2 in. high.
- H** 6-7/8 in.
- I** 15 in.
- J** 12 in.
- K** Shaft Bearing Housing.
- L** 1 in. NPT Tapping ported to Column Pipe.
- M** Shaft Bearings (Supplied by pump manufacturer): Total length of bearing to be 10 in. and a maximum O.D. of 1-5/8 in.
- N** 3/4 in. drain.
- O** Dimension from center of Discharge Outlet to bottom of Discharge Body: 7-11/16 in.
- P** 1-1/2 in. NPT Tapping for optional Water Sampler.
- Q** 1 in. NPT Tapping.
- R** Rabbet Fit for Upper Grease Seal Bearing Housing: Minimum O.D. of 3 in. and maximum O.D. of 4 in.; maximum Bolt Circle of Bearing Housing - 5-1/4 in. (Bearing & Bearing Housing supplied by others)
- S** 1 in.
- T** 1-1/2 in.
- U** 4 in.
- W** 21-3/8 in.
- X** 9-5/16 in.
- Y** Lifting Lug: (2) Lugs for inserting or removal of inner well parts.

Z **SPOOL TO DROP PIPE CONNECTION SIZES:** **4 in. NPT** **5 in. NPT** **6 in. NPT**
 The Standard Spool is designed for a 65,000 lb. (3/4 Taper) (3/4 Taper) (3/4 Taper)
 maximum load. Spools are available to sustain higher loads.

AA Dimension from center of Discharge Outlet to bottom of Spool:..... 14-7/16 in. 14-7/16 in. 14-1/2 in.

DISCHARGE CONNECTIONS & SIZES:

For **[BB]** Butt Weld (IPS): 4 in. I.D. 5 in. I.D. 6 in. I.D.
 For **[CC]** Flanged (ASA Std. 150 lb.): 4 in. I.D. 5 in. I.D. 6 in. I.D.
 For **[DD]** Threaded nipple (NPT): 4 in. I.D. 5 in. I.D. 6 in. I.D.
 For **[EE]** Transition Sleeve (IPS):..... 4 in. I.D. N.A. 6 in. I.D.

FF Dimension from center of Well Casing to the end of Discharge Outlet.
 With **[BB]** Butt Weld Discharge: 18-1/2 in. 18-1/2 in. 12-15/16 in.
 With **[CC]** Flanged Discharge: 21-1/2 in. 22 in. 16-7/16 in.
 With **[DD]** Threaded Discharge:..... 21-7/16 in. 21-7/16 in. 16-15/16 in.
 With **[EE]** Transition Sleeve Discharge:..... 24-1/2 in. N.A. 18-15/16 in.

GG **SPOOL ASSEMBLY**

Area of Water Passage(s):..... 12.56 sq. in. 25.12 sq. in. 25.12 sq. in.
 Percent Area of Water Passage(s) to Area of Drop Pipe: 100% 125% 87%

COMPONENT MATERIALS

- Well Vent** - cast iron, green enamel finish.
- Motor Support** - cast iron, black corrosion resistant coating.
- Combination Hold-Down & Lift-Out Mechanism** - steel, black corrosion resistant coating.
- Hold-Down Pipe** - steel, black corrosion resistant coating.
- Pitless Case** - steel, corrosion resistant coating.
- Discharge Body** - steel, lead free galvanized.
- Spool** - steel, lead free galvanized.

NOTE: Provision for prelubrication not available.
NOTE: Units are designed for motors having an RPM of 1800 or less and a 10" or 12" base diameter having a 9-1/8" bolt circle. Maximum bury depth will be 9 feet. For units requiring exceptions to these conditions of design, special specifications must be used.

NOTE: Any combination between Column Pipe and Discharge Outlet size is possible, if required.

SPECIFICATIONS ARE SUBJECT TO CHANGE WITHOUT NOTICE

BB121-12(05-08)