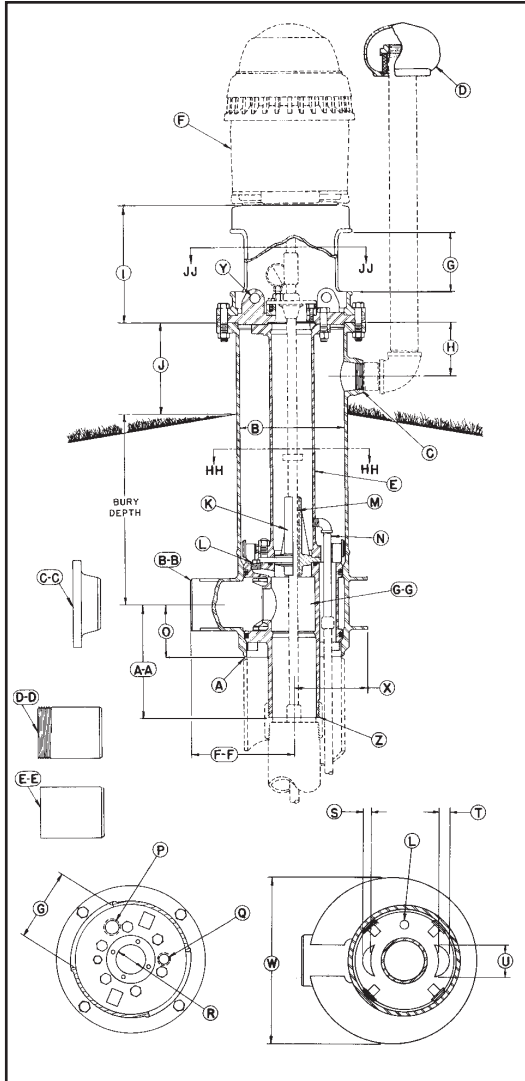




10" TURBINE PITLESS UNIT SPECIFICATIONS



- A Unit minimum I.D. 10 in.: chamfered for butt weld to well casing.
- B Pitless Unit with Black Upper Case Std.: 13-1/4 in. I.D., 14 in. O.D.
- C 2-1/2 in. NPT Tapping for Well Vent.
- D 2-1/2 in. Protected Screen Well Vent.
- E Lift-Out Pipe: 5 in. IPS.
- F Turbine Motor having a maximum base diameter of 12 in. (Supplied by others)
- G Motor Mount Access Openings: (2) openings measuring 9 in. wide x 8-1/2 in. high.
- H 6-7/8 in.
- I 15 in.
- J 12 in.
- K Shaft Bearing Housing.
- L 1 in. N.P.T. Tapping ported to Column Pipe.
- M Shaft Bearings (Supplied by pump manufacturer): Total length of bearing to be 10 in. and a maximum O.D. of 1-5/8 in.
- N 3/4 in. drain.
- O Dimension from center of Discharge Outlet to bottom of Discharge Body: 15-3/4 in.
- P 1-1/2 in. NPT Tapping for optional Water Sampler.
- Q 1 in. NPT Tapping.
- R Rabbet Fit for Upper Grease Seal Bearing Housing: Minimum O.D. of 3 in. and maximum O.D. of 4 in.; maximum Bolt Circle of Bearing Housing - 5-1/4 in. (Bearing & Bearing Housing supplied by others)
- S 1 in.
- T 1-1/2 in.
- U 4 in.
- W 21-3/8 in.
- X 9-5/16 in.
- Y Lifting Lug: (2) Lugs for inserting or removal of inner well parts.
- Z **SPOOL TO DROP PIPE CONNECTION SIZES:** 4 in. NPT 5 in. NPT 6 in. NPT
The Standard Spool is designed for a 65,000 lb. ... (3/4 Taper) (3/4 Taper) (3/4 Taper)
maximum load. Spools are available to sustain higher loads.
- AA Dimension from center of Discharge Outlet to bottom of Spool: 13-7/16 in. 14-7/16 in. 14-1/2 in.
- DISCHARGE CONNECTIONS & SIZES:**
For [BB] Butt Weld (IPS): 4 in. I.D. 5 in. I.D. 6 in. I.D.
For [CC] Flanged (ASA Std. 150 lb.): 4 in. I.D. 5 in. I.D. 6 in. I.D.
For [DD] Threaded Nipple (NPT): 4 in. I.D. 5 in. I.D. 6 in. I.D.
For [EE] Transition Sleeve (IPS): 4 in. I.D. N.A. 6 in. I.D.
- FF Dimension from center of Well Casing to the end of Discharge Outlet.
With [BB] Butt Weld Discharge: 18-1/2 in. 18-1/2 in. 12-15/16 in.
With [CC] Flanged Discharge: 21-1/2 in. 22 in. 16-7/16 in.
With [DD] Threaded Discharge: 21-7/16 in. 21-7/16 in. 16-15/16 in.
With [EE] Transition Sleeve Discharge: 24-1/2 in. N.A. 18-15/16 in.
- GG **SPOOL ASSEMBLY**
Area of Water Passage(s): 12.56 sq. in. 25.12 sq. in. 25.12 sq. in.
Percent Area of Water Passage(s) to Area of Drop Pipe: 100% 125% 87%

COMPONENT MATERIALS

- Well Vent - cast iron, green enamel finish.
- Motor Support - cast iron, black corrosion resistant coating.
- Combination Hold-Down & Lift-Out Mechanism - steel, black corrosion resistant coating.
- Hold-Down Pipe - steel, black corrosion resistant coating.
- Pitless Case - steel, corrosion resistant coating.
- Discharge Body - steel, lead free galvanized.
- Spool - steel, lead free galvanized.
- NOTE: Provision for prelubrication not available.

NOTE: Units are designed for motors having an RPM of 1800 or less and a 10" or 12" base diameter having a 9-1/8" bolt circle. Maximum bury depth will be 9 feet. For units requiring exceptions to these conditions of design, special specifications must be used.

NOTE: Any combination between Column Pipe and Discharge Outlet size is possible, if required.

SPECIFICATIONS ARE SUBJECT TO CHANGE WITHOUT NOTICE

BB120-10(05-08)