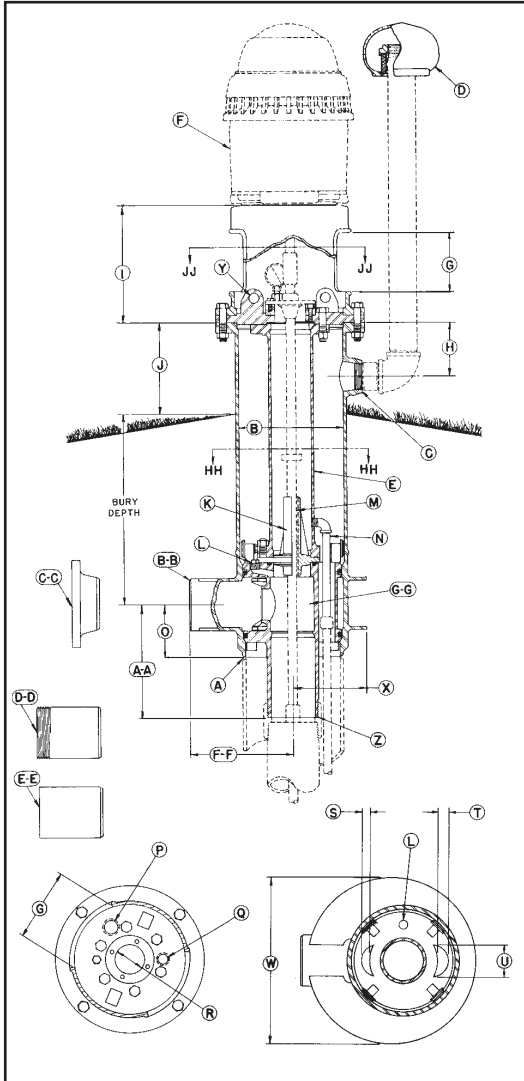




20" TURBINE PITLESS UNIT SPECIFICATIONS



- A Unit minimum I.D. 19-1/4 in.: chamfered for butt weld to well casing.
- B Pitless Unit with Black Upper Case Std.: 21 in. I.D., 22 in. O.D.
- C 2-1/2 in. NPT Tapping for Well Vent.
- D 2-1/2 in. Protected Screen Well Vent.
- E Lift-Out Pipe: 7 in. IPS.
- F Turbine Motor having a maximum base diameter of 24-1/2 in. *(Supplied by others)*
- G Motor Mount Access Openings: (2) openings measuring 12-3/8 in. wide x 8-1/2 in. high.
- H 7-1/8 in.
- I 15 in.
- J 12 in.
- K Shaft Bearing Housing.
- L Three 1 in. NPT Tappings ported to Column Pipe.
- M Shaft Bearings *(Supplied by pump manufacturer)*: Total length of bearing to be 10 in. and a maximum O.D. of 3-1/4 in.
- N 3/4 in. drain.
- O Dimension from center of Discharge Outlet to bottom of Discharge Body: 13-3/4 in.
- P 1-1/2 in. NPT Tapping for optional Water Sampler.
- Q 1 in. NPT Tapping.
- R Rabbet Fit for Upper Grease Seal Bearing Housing: Minimum O.D. of 3 in. and maximum O.D. of 4 in.; maximum Bolt Circle of Bearing Housing - 5-1/4 in. *(Bearing & Bearing Housing supplied by others)*
- S 2 in.
- T 3-3/8 in.
- U 6-3/4 in.
- W 32-1/2 in.
- X 14-1/4 in.
- Y Lifting Lug: (2) Lugs for inserting or removal of inner well parts.
- Z **SPOOL TO DROP PIPE CONNECTION SIZES: 6 in. NPT 8 in. NPT 10 in. NPT**
The Standard Spool is designed for a 150,000 lb. (3/4 Taper) (3/4 Taper) (3/4 Taper) maximum load. Spools are available to sustain higher loads.

AA Dimension from center of Discharge Outlet to bottom of Spool:.....	24-9/16 in.	24-9/16 in.	19-11/16 in.
---	-------------	-------------	--------------

DISCHARGE CONNECTIONS & SIZES:

For [BB] Butt Weld (IPS):.....	6 in. I.D.	8 in. I.D.	10 in. I.D.
For [CC] Flanged (ASA Std. 150 lb.):.....	6 in. I.D.	8 in. I.D.	10 in. I.D.
For [DD] Threaded nipple (NPT):.....	6 in. I.D.	8 in. I.D.	10 in. I.D.
For [EE] Transition Sleeve (IPS):.....	6 in. I.D.	8 in. I.D.	10 in. I.D.

FF Dimension from center of Well Casing to the end of Discharge Outlet.			
With [BB] Butt Weld Discharge:.....	26-1/2 in.	26-1/2 in.	19-1/2 in.
With [CC] Flanged Discharge:.....	30 in.	30-1/2 in.	23-1/2 in.
With [DD] Threaded Discharge:.....	30-9/16 in.	30-9/16 in.	31-9/16 in.
With [EE] Transition Sleeve Discharge:.....	32-9/16 in.	32-9/16 in.	25-1/2 in.
GG SPOOL ASSEMBLY			
Area of Water Passage(s):.....	33.18 sq. in.	66.36 sq. in.	66.36 sq. in.
Percent Area of Water Passage(s) to Area of drop pipe	230%	132%	85%

COMPONENT MATERIALS

- Well Vent - cast iron, green enamel finish.
- Motor Support - cast iron, black corrosion resistant coating.
- Combination Hold-Down & Lift-Out Mechanism - steel, black corrosion resistant coating.
- Hold-Down Pipe - steel, black corrosion resistant coating.
- Pitless Case - steel, corrosion resistant coating.
- Discharge Body - steel, lead free galvanized.
- Spool - steel, lead free galvanized.
- NOTE: Provision for prelubrication not available.
- NOTE: Units are designed for motors having an RPM of 1800 or less and a 24-1/2" base diameter having a 14-3/4" bolt circle. Maximum bury depth will be 9 feet. For units requiring exceptions to these conditions of design, special specifications must be used.
- NOTE: Any combination between Column Pipe and Discharge Outlet size is possible, if required.

SPECIFICATIONS ARE SUBJECT TO CHANGE WITHOUT NOTICE

BB125-20(05-08)