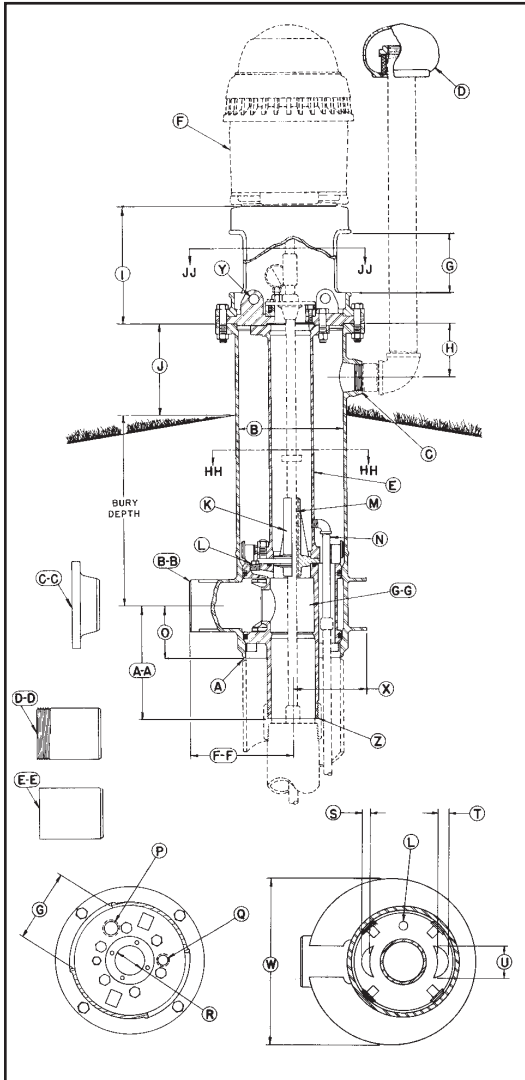




# 18" TURBINE PITLESS UNIT SPECIFICATIONS



- A** Unit minimum I.D. 17-1/4 in.: chamfered for butt weld to well casing.
- B** Pitless Unit with Black Upper Case Std.: 19-1/4 in. I.D., 20 in. O.D.
- C** 2-1/2 in. NPT Tapping for Well Vent.
- D** 2-1/2 in. Protected Screen Well Vent.
- E** Lift-Out Pipe: 7 in. IPS.
- F** Turbine Motor having a maximum base diameter of 20 in. *(Supplied by others)*
- G** Motor Mount Access Openings: (2) openings measuring 12-3/8 in. wide x 8-1/2 in. high.
- H** 7-1/8 in.
- I** 15 in.
- J** 12 in.
- K** Shaft Bearing Housing.
- L** Two 1 in. NPT Tappings ported to Column Pipe.
- M** Shaft Bearings *(Supplied by pump manufacturer)*: Total length of bearing to be 10 in. and a maximum O.D. of 3-1/4 in.
- N** 3/4 in. drain.
- O** Dimension from center of Discharge Outlet to bottom of Discharge Body: 10-15/16 in.
- P** 1-1/2 in. NPT Tapping for optional Water Sampler.
- Q** 1 in. NPT Tapping.
- R** Rabbit Fit for Upper Grease Seal Bearing Housing: Minimum O.D. of 3 in. and maximum O.D. of 4 in.; maximum Bolt Circle of Bearing Housing - 5-1/4 in. *(Bearing & Bearing Housing supplied by others)*
- S** 1-1/2 in.
- T** 2-5/8 in.
- U** 6 in.
- W** 30-1/2 in.
- X** 13-1/4 in.
- Y** Lifting Lug: (2) Lugs for inserting or removal of inner well parts.

**Z** **SPOOL TO DROP PIPE CONNECTION SIZES:**    **6 in. NPT**    **8 in. NPT**    **10 in. NPT**  
 The Standard Spool is designed for a 150,000 lb. (3/4 Taper)    (3/4 Taper)    (3/4 Taper)  
 maximum load. Spools are available to sustain higher loads.

**AA** Dimension from center of Discharge Outlet to bottom of Spool:..... 24-1/16 in.    24-1/16 in.    19-3/32 in.

**DISCHARGE CONNECTIONS & SIZES:**

For [BB] Butt Weld (IPS):.....	6 in. I.D.	8 in. I.D.	10 in. I.D.
For [CC] Flanged (ASA Std. 150 lb.):.....	6 in. I.D.	8 in. I.D.	10 in. I.D.
For [DD] Threaded nipple (NPT):.....	6 in. I.D.	8 in. I.D.	10 in. I.D.
For [EE] Transition Sleeve (IPS):.....	6 in. I.D.	8 in. I.D.	10 in. I.D.

**FF** Dimension from center of Well Casing to the end of Discharge Outlet.

With [BB] Butt Weld Discharge:.....	25-1/2 in.	25-1/2 in.	18-1/2 in.
With [CC] Flanged Discharge:.....	29 in.	29-1/2 in.	22-1/2 in.
With [DD] Threaded Discharge:.....	29-1/2 in.	29-1/2 in.	23-5/8 in.
With [EE] Transition Sleeve Discharge:.....	31-9/16 in.	31-9/16 in.	24-9/16 in.

**GG** **SPOOL ASSEMBLY**

Area of Water Passage(s):.....	33.18 sq. in.	66.36 sq. in.	66.36 sq. in.
Percent Area of Water Passage(s) to Area of Drop Pipe:.....	115%	132%	85%

**COMPONENT MATERIALS**  
**Well Vent** - cast iron, green enamel finish.  
**Motor Support** - cast iron, black corrosion resistant coating.  
**Combination Hold-Down & Lift-Out Mechanism** - steel, black corrosion resistant coating.  
**Hold-Down Pipe** - steel, black corrosion resistant coating.  
**Pitless Case** - steel, corrosion resistant coating.  
**Discharge Body** - steel, lead free galvanized.  
**Spool** - steel, lead free galvanized.  
**NOTE:** Provision for prelubrication not available.  
**NOTE:** Units are designed for motors having an RPM of 1800 or less and a 20" base diameter having a 14-3/4" bolt circle. Maximum bury depth will be 9 feet. For units requiring exceptions to these conditions of design, special specifications must be used.  
**NOTE:** Any combination between Column Pipe and Discharge Outlet size is possible, if required.

SPECIFICATIONS ARE SUBJECT TO CHANGE WITHOUT NOTICE

BB124-18(05-08)