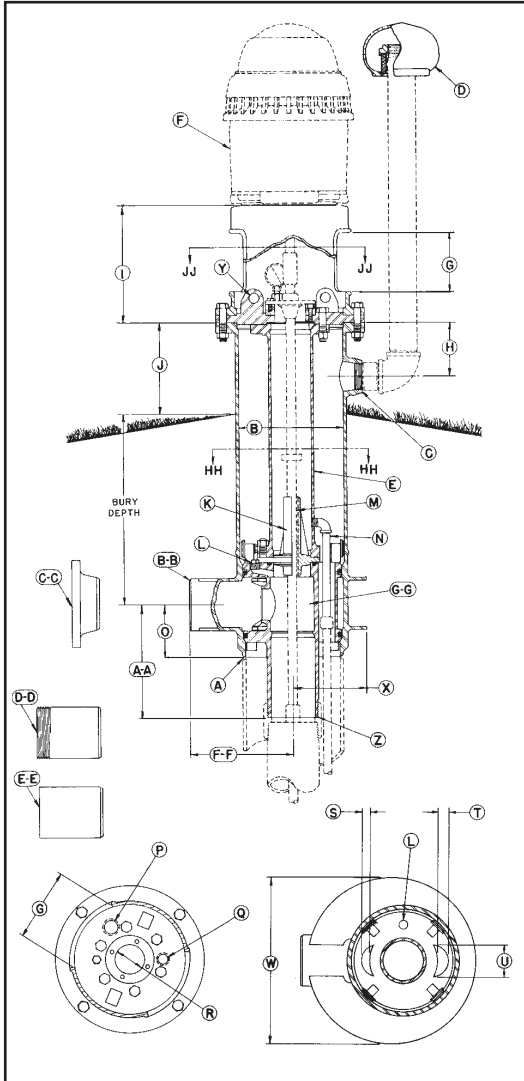




16" TURBINE PITLESS UNIT SPECIFICATIONS



- A Unit minimum I.D. 15-1/4 in.: chamfered for butt weld to well casing.
- B Pitless Unit with Black Upper Case Std.: 17-1/4 in. I.D., 18 in. O.D.
- C 2-1/2 in. NPT Tapping for Well Vent.
- D 2-1/2 in. Protected Screen Well Vent.
- E Lift-Out Pipe: 6 in. IPS.
- F Turbine Motor having a maximum base diameter of 18-5/8 in. *(Supplied by others)*
- G Motor Mount Access Openings: (2) openings measuring 8-3/4 in. wide x 8-1/4 in. high.
- H 7-5/32 in.
- I 14 in.
- J 12 in.
- K Shaft Bearing Housing.
- L Two 1 in. NPT Tappings ported to Column Pipe.
- M Shaft Bearings *(Supplied by pump manufacturer)*: Total length of bearing to be 10 in. and a maximum O.D. of 2-1/2 in.
- N 3/4 in. drain.
- O Dimension from center of Discharge Outlet to bottom of Discharge Body: 11-1/16 in.
- P 1-1/2 in. NPT Tapping for optional Water Sampler.
- Q 1 in. NPT Tapping.
- R Rabbet Fit for Upper Grease Seal Bearing Housing: Minimum O.D. of 3 in. and maximum O.D. of 4 in.; maximum Bolt Circle of Bearing Housing - 5-1/4 in. *(Bearing & Bearing Housing supplied by others)*
- S 1-1/4 in.
- T 2-1/4 in.
- U 5 in.
- W 27-7/16 in.
- X 11-15/16 in.

Z SPOOL TO DROP PIPE CONNECTION SIZES: **5 in. NPT** **6 in. NPT** **8 in. NPT**
 The Standard Spool is designed for a 120,000 lb. (3/4 Taper) (3/4 Taper) (3/4 Taper)
 maximum load. Spools are available to sustain
 higher loads.

AA Dimension from center of Discharge Outlet to
 bottom of Spool:..... 16-1/4 in. 21-7/8 in. 15-13/16 in.

DISCHARGE CONNECTIONS & SIZES:

For **[BB]** Butt Weld (IPS):..... 4 in. I.D. 5 in. I.D. 6 in. I.D.
 For **[CC]** Flanged (ASA Std. 150 lb.):..... 4 in. I.D. 5 in. I.D. 6 in. I.D.
 For **[DD]** Threaded nipple (NPT):..... 4 in. I.D. 5 in. I.D. 6 in. I.D.
 For **[EE]** Transition Sleeve (IPS):..... N.A. 5 in. I.D. 6 in. I.D.

FF Dimension from center of Well Casing to the end
 of Discharge Outlet.
 With **[BB]** Butt Weld Discharge:..... 23 in. 23 in. 17 in.
 With **[CC]** Flanged Discharge:..... 26-1/2 in. 26-1/2 in. 21 in.
 With **[DD]** Threaded Discharge:..... 26 in. 27 in. 21 in.
 With **[EE]** Transition Sleeve Discharge:..... N.A. 29 in. 23 in.

GG SPOOL ASSEMBLY
 Area of Water Passage(s):..... 19.6 sq. in. 39.2 sq. in. 39.2 sq. in.
 Percent Area of Water Passage(s) to Area of
 Drop Pipe: 100% 138% 78.2%

COMPONENT MATERIALS

- Well Vent** - cast iron, green enamel finish.
- Motor Support** - cast iron, black corrosion resistant coating.
- Combination Hold-Down & Lift-Out Mechanism** - steel, black corrosion resistant coating.
- Hold-Down Pipe** - steel, black corrosion resistant coating.
- Pitless Case** - steel, corrosion resistant coating.
- Discharge Body** - steel, lead free galvanized.
- Spool** - steel, lead free galvanized.

NOTE: Provision for prelubrication not available.
NOTE: Units are designed for motors having an RPM of 1800 or less and a 18-5/8" base diameter having a 14-3/4" bolt circle. Maximum bury depth will be 9 feet. For units requiring exceptions to these conditions of design, special specifications must be used.

NOTE: Any combination between Column Pipe and Discharge Outlet size is possible, if required.

SPECIFICATIONS ARE SUBJECT TO CHANGE WITHOUT NOTICE

BB123-16(05-08)