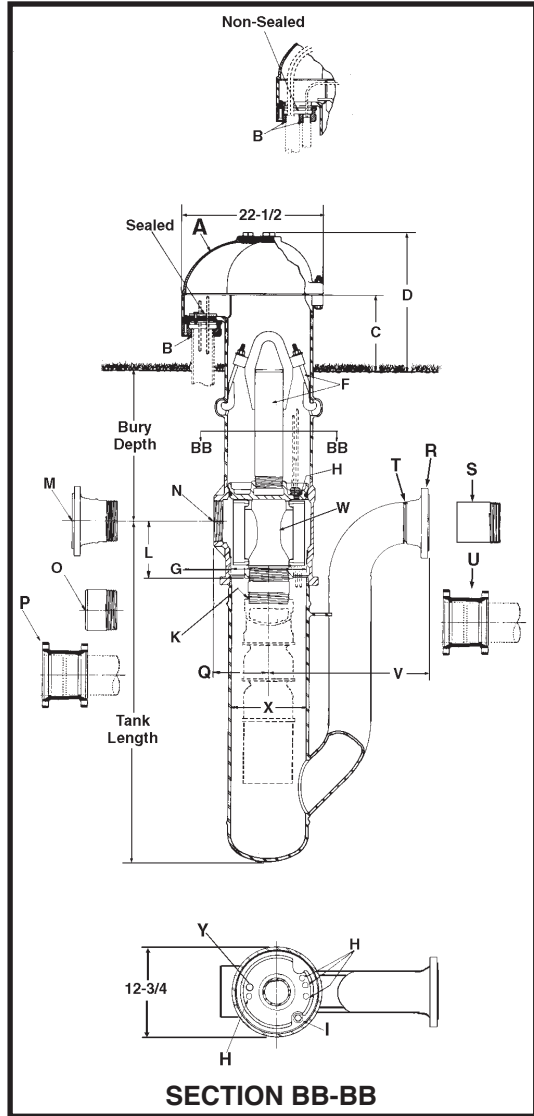


10" PITLESS BOOSTER SPECIFICATIONS



- A** Seal Cap: The watertight cap bolts on top of the upper casing forming a watertight connection with a gasket.
- B** Conduit Tapping Sizes: 3" NPT with sealed conduit connection. Watertight conduit seals for most common cable sizes are available..
- C** Distance from ground level to top of Pitless Case: 12".
- D** Distance from ground level to top of Seal Cap: 23".
- E** Pitless Case size: 12" I.D. 12-3/4" O.D.
- F** "Hold Down-Lift Out Assembly: Positions and clamps spool to discharge body to prevent rotation during pump start up. Hold Down-Lift-Out pipe size 4" IPS. Designed Lift-Out assembly load: 60,000 lbs. (2) Hold-Down hooks supplied.
- G** Pitless Unit minimum I.D.: 10"
- H** Motor cable tappings through spool: (4) 1/2" NPT (with cable connectors)
- I** Tapping into Pressure Zone: 3/8" NPT. (Furnished with square head plug)
- K** Spool to Drop Pipe connection sizes: **4" NPT** **5" NPT** **6" NPT**
- L** Dimension from center of discharge outlet to bottom of spool:..... 12-1/8" 12" 11-1/8"
- DISCHARGE CONNECTIONS & SIZES**
- M** For Flanged (ASA Std. 150 lbs.): 4" I.D. 5" I.D. 6" I.D.
- N** For Threaded Nipple (NPT): 4" I.D. 5" I.D. 6" I.D.
- O** For Butt Weld (IPS): 4" I.D. 5" I.D. 6" I.D.
- P** For Transition Sleeve (IPS): 4" I.D. N.A. 6" I.D.
- Q** Dimension from center of Booster Unit to end of discharge outlet.
 With **M** Flanged Discharge:..... 15-1/4" 15-1/2" 15-9/16"
 With **N** Threaded Discharge:..... 10-9/32" 10-5/32" 9-1/8"
 With **O** Welded Discharge..... 12-7/32" 12-1/32" 12-1/16"
 With **P** Transition Discharge..... 24" N.A. 22"
- INLET CONNECTIONS & SIZES**
- R** For Flanged (ASA Std. 150 lbs.): 4" I.D. 5" I.D. 6" I.D.
- S** For Threaded Nipple (NPT): 4" I.D. 5" I.D. 6" I.D.
- T** For Butt Weld (IPS): 4" I.D. 5" I.D. 6" I.D.
- U** For Transition Sleeve (IPS): 4" I.D. N.A. 6" I.D.
- V** Dimension from center of Booster Unit to end of Inlet Connection.
 With **R** Flanged Inlet:..... 30 3/16" 30-11/16" 25-3/16"
 With **S** Threaded Inlet: 30-3/16" 30-3/16" 25-11/16"
 With **T** Welded Inlet:..... 27-3/16" 27-3/16" 21-11/16"
 With **U** Transition Inlet..... 39" N.A. 34"
- W** **SPOOL ASSEMBLY**
 Area of water passages 25.12 Sq. In. 25.12 Sq. In. 25.12 Sq. In.
 Percent area of water passages to area of drop pipe 197% 125% 87%
- X** Tank Pipe size: 10" I.D. 10" I.D. 10" I.D.
- Y** Tapping into Suction Zone 1" NPT 1" NPT 1" NPT

COMPONENT MATERIALS

- Tank & Inlet Pipes** - Steel, black corrosion resistant coating.
- Cap** - Cast iron, green enamel finish.
- Conduit Box** - Steel, black corrosion resistant coating.
- Conduit Connector** - Cast iron, green enamel finish.
- Combination Hold-Down & Lift-Out Assembly** - Galvanized
- Hold-Down Pipe** - Steel, black corrosion resistant coating.
- Pitless Case** - Steel, black corrosion resistant coating.
- Discharge Body** - Ductile iron, lead free galvanized.
- Spool** - Steel, lead free galvanized.

NOTE: Inlet pipe & tank pipe tested to 200 P.S.I., spool discharge pressure tested to 300 P.S.I.

NOTE: Any combination between Drop Pipe and Discharge Outlet size is possible, if required.

Specifications subject to change without notice

BB132-10(05-08)