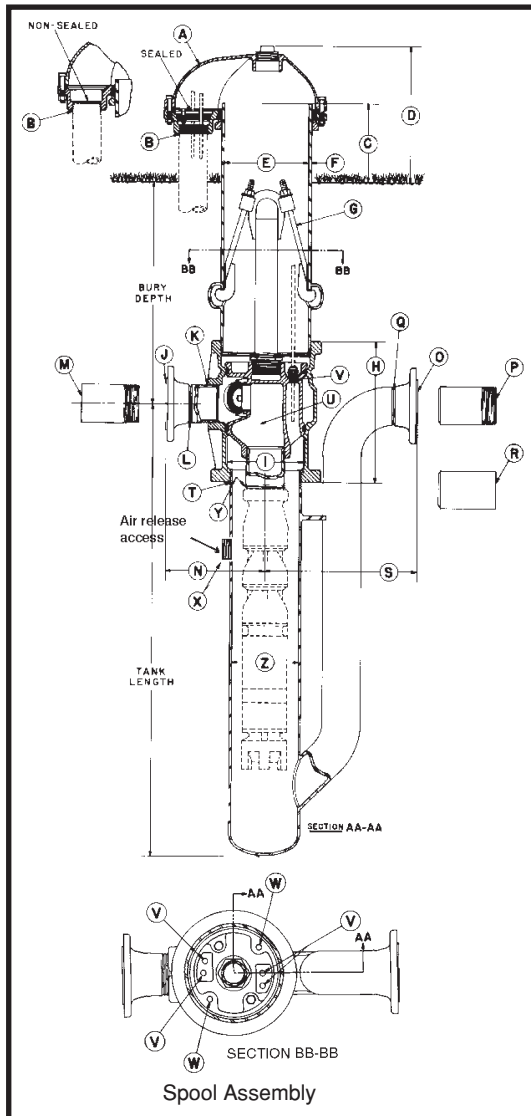




6" PITLESS BOOSTER SPECIFICATIONS



- A** Seal Cap: The watertight cap bolts to a compression seal ring securing around the pitless casing.
- B** Conduit Tapping Size (Standard):..... 1-1/2" NPT
Watertight conduit seals for most common cable sizes are available.
- C** Distance from ground level to top of Pitless Case 12 in.
- D** Distance from ground level to top of Well Cap 14-3/4 in.
- E** Pitless Case Size 7 in.
- F** Pitless Case wall thickness300 in.
- G** "Hold Down-Lift Out Assembly": positions & clamps spool to Discharge Body to prevent rotation during pump start up
Hold-Down, Lift-Out Pipe size:..... 1-1/4"
Designed "Lift-Out" assembly load:..... 4700 lbs.
- H** Discharge Body Size:..... 9-11/16 in. O.D.x 11-1/4 in. long
- I** Pitless Unit minimum I.D.: 6-3/8 in.
- DISCHARGE CONNECTIONS AND SIZES**
- J** For Flanged (ASA Std. 150 lbs.): 3 in. I.D.
- K** For Threaded Nipple (NPT): 3 in. I.D.
- L** For Butt Weld (IPS): 3 in. I.D.
- M** For Transition Sleeve (IPS): 3 in. I.D.
- N** Dimension from center of Booster Unit to end of discharge outlet.
With **J** Flanged Discharge:..... 10-5/8 in.
With **K** Threaded Discharge:..... 5-25/32 in.
With **L** Welded Discharge: 7-7/8 in.
With **M** Transition Discharge:..... 18 in.
- INLET CONNECTIONS AND SIZES**
- O** For Flanged (ASA Std. 150 lbs.): 3 in. I.D.
- P** For Threaded Nipple (NPT): 3 in. I.D.
- Q** For Butt Weld (IPS): 3 in. I.D.
- R** For Transition Sleeve (IPS): 3 in. I.D.
- S** Dimension from center of Booster Unit to end of Inlet Connection.
With **O** Flanged Inlet: 15-5/8 in.
With **P** Threaded Inlet: 15-7/8 in.
With **Q** Welded Inlet: 12-7/8 in.
With **R** Transition Inlet: 25 in.
- T** Discharge Body to tank pipe connection: 6 in. NPT
- U** SPOOL ASSEMBLY
Spool design load:..... 64,000 lbs.
- WITHOUT CHECK VALVES -
Area of water passages: 10 sq. in.
Percent area of water passages to area of Drop Pipe:..... 135%
- WITH TWO CHECK VALVES -
Area of valve passages:..... 6.28 sq. in.
Percent area of valve passages to area of Drop Pipe: 89%
- V** Motor Cable tappings through spool (w/cable connectors): (4) 3/8 in. NPT
Maximum allowable..... (4) 3/8 in. NPT
- W** Tapping into Pressure Zone: 3/8 in. NPT
(Furnished with square head plug)
- X** Tapping into Suction Zone 1"
(Furnished with square head plug)
- Y** Spool to drop pipe nipple connection:..... 3 in. NPT
- Z** Tank Pipe Size: 6 in. I.D.

COMPONENT MATERIALS

- Cap & Conduit Box** - Cast iron, Green enamel finish.
- Combination Hold-Down & Lift-Out Mechanism** - lead free galvanized
- Hold-Down Pipe** - Steel, corrosion resistant coating.
- Pitless Case** - Steel, black corrosion resistant coating.
- Spool** - Cast iron, lead free galvanized.
- Discharge Body** - Ductile or Cast Iron, lead free galvanized.
- Check Valve Body & Arms** - Brass.
- Check Valve Seat** - Brass.
- Check Valve Spring** - Monel.
- Compression Seal Ring & Check Valve Facing** - Neoprene.
- Conduit Seal & O-Rings** - Neoprene.
- Tank & Inlet Pipes** - Steel, black corrosion resistant coating.
- NOTE:** Inlet pipe & tank pipe tested to 200 P.S.I., spool discharge pressure tested to 300 P.S.I.

Specifications subject to change without notice

BB134-6(05-08)

Baker Manufacturing Co., LLC/Monitor Division • Evansville, WI 53536
Phone: 800-356-5130 • Fax: 608-882-3777 • Website: bakermonitor.com