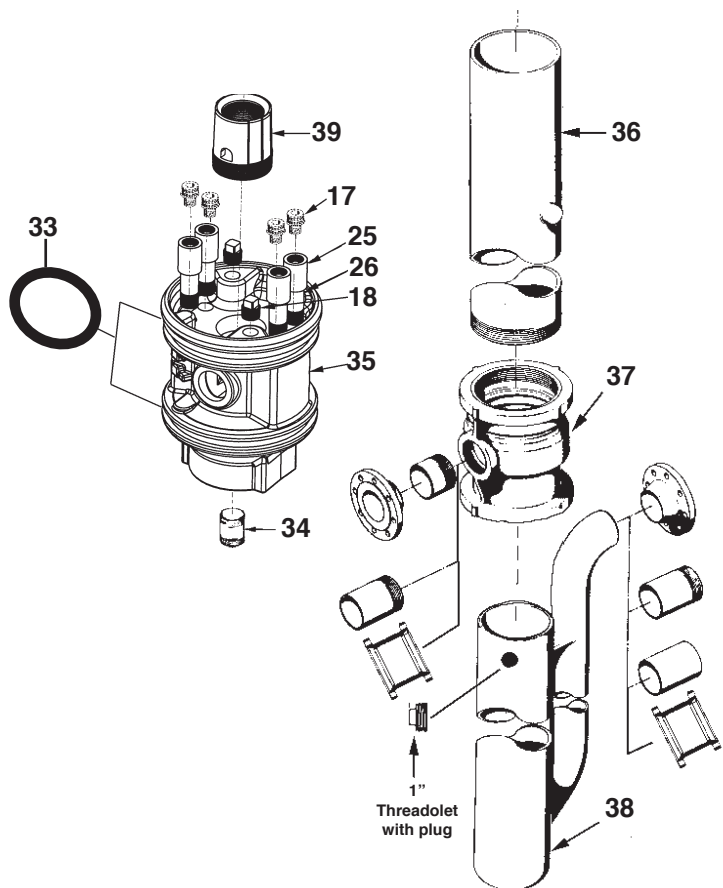
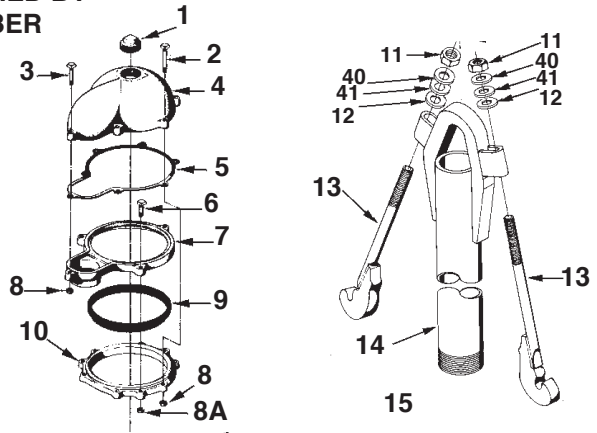


5" Pitless Booster Parts Breakdown

ANY ORDER FOR REPAIR PARTS MUST BE ACCOMPANIED BY THE PITLESS UNIT SERIAL NUMBER AND ORDER NUMBER

| Key No. | Qty | Description | Ord. No. |
|---------|-----|---|----------|
| 1 | 1 | Pipe Plug, 1 1/4" NPT | HD71G |
| 2 | 5 | Machine Bolt, 3/8-16NCx3 1/2" L | PS94S |
| 3 | 1 | Machine Bolt, 3/8-16NCx2 1/2" L. | PS93S |
| 4 | 1 | Seal Cap | PS136 |
| 5 | 1 | Gasket | PS196 |
| 6 | 2 | Machine bolt, 5/16-18NCx2" L. | PS132S |
| 7 | 1 | Retainer Ring | PS376 |
| 8 | 6 | Hex Nut, 3/8-16NC | UB17S |
| 8A | 2 | Hex Nut, 5/16-18NC | PC434S |
| 9 | 1 | Seal Ring | PS166 |
| 10 | 1 | Depression Ring | PS186 |
| 11 | 2 | Hex Nut, 5/8-11NC | NA75 |
| 12 | 2 | Washer | WA75 |
| 13 | 2 | Hold-Down Hook | UJ7BH |
| 14 | 1 | Lift-Out Pipe & Bail Assembly Note: Must be ordered by description & unit Serial Number | ----- |
| 14 | 1 | Lift-Out Pipe & Hold Down Assy Note: Must be ordered by description & unit Serial Number | ----- |
| 17 | 4 | Cable Connectors Note: Must be ordered by description & unit Serial Number | ----- |
| 18 | 2 | Pipe Plug, 3/8-18 NPT | UN122 |
| 25 | 4 | Coupling 3/8-18NPT | PS182 |
| 26 | 4 | Nipple 3/8x2-1/2 NPT | N3 |
| 33 | 2 | O-Ring | NC15 |
| 34 | 1 | Pipe Nipple, 2" NPT x 4" L. | PS265 |
| 35 | 1 | Spool | YC321 |
| --- | 1 | Spool Assy. less check valves Includes key nos 18, 25, 26, 33, 35 & 39 | 6S4PSF |
| 36 | 1 | Casing | ----- |
| 37 | 1 | Discharge Body, FIP discharge outlet standard. Note: Must be ordered by description & unit Serial Number. | UE44 |
| 38 | 1 | Tank & Inlet Pipe Assy. Note: Must be ordered by description & unit Serial Number | ----- |
| 39 | 1 | Spool Plug | YC218 |
| 40 | 8 | 5/8" Washer | PC286 |
| 41 | 4 | 5/8" Washer | PC417 |



OM5150(05-08)