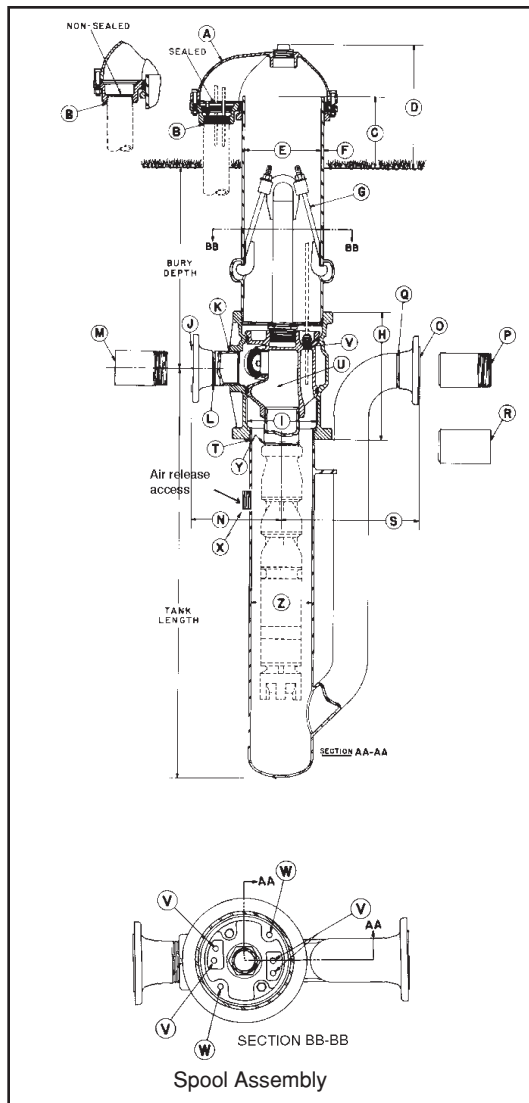




5" PITLESS BOOSTER SPECIFICATIONS



- A** Seal Cap: The watertight cap bolts to a compression seal ring securing around the pitless casing.
- B** Conduit Tapping Size (Standard):.....1-1/2" NPT
Watertight conduit seals for most common cable sizes are available.
- C** Distance from ground level to top of Pitless Case 12 in.
- D** Distance from ground level to top of Well Cap 14-3/4 in.
- E** Pitless Case Size6 in.
- F** Pitless Case wall thickness280 in.
- G** "Hold Down-Lift Out Assembly": positions & clamps spool to Discharge Body to prevent rotation during pump start up
Hold-Down, Lift-Out Pipe size:..... 1-1/4"
Designed "Lift-Out" assembly load:.....4700 lbs.
- H** Discharge Body Size:..... 8-3/4 in. O.D.x 8-15/16 in. long
- I** Pitless Unit minimum I.D.:.....6 in.
- DISCHARGE CONNECTIONS AND SIZES**
- J** For Flanged (ASA Std. 150 lbs.): 2 in. I.D.
- K** For Threaded Nipple (NPT): 2 in. I.D.
- L** For Butt Weld (IPS): 2 in. I.D.
- M** For Transition Sleeve (IPS):..... 2 in. I.D.
- N** Dimension from center of Booster Unit to end of discharge outlet.
With **J** Flanged Discharge:..... 9-1/4 in.
With **K** Threaded Discharge:..... 4-7/16 in.
With **L** Welded Discharge: 6-3/4 in.
With **M** Transition Discharge:..... 15-3/4 in.
- INLET CONNECTIONS AND SIZES**
- O** For Flanged (ASA Std. 150 lbs.): 2 in. I.D.
- P** For Threaded Nipple (NPT): 2 in. I.D.
- Q** For Butt Weld (IPS): 2 in. I.D.
- R** For Transition Sleeve (IPS):..... 2 in. I.D.
- S** Dimension from center of Booster Unit to end of Inlet Connection.
With **O** Flanged Inlet: 10-21/32 in.
With **P** Threaded Inlet: 11-5/32 in.
With **Q** Welded Inlet: 8-5/32 in.
With **R** Transition Inlet:..... 20-5/32 in.
- T** Discharge Body to tank pipe connection: 5 in. NPT
- U** SPOOL ASSEMBLY
Spool design load:.....4200 lbs.
- V** Motor Cable tapplings through spool (w/cable connectors): (4) 3/8 in. NPT
Maximum allowable..... (4) 3/8 in. NPT
- W** Tapping into Pressure Zone: 3/8 in. NPT
(Furnished with square head plug)
- X** Tapping into Suction Zone 1"
(Furnished with square head plug)
- Y** Spool to drop pipe nipple connection:..... 2 in. NPT
- Z** Tank Pipe Size: 5 in. I.D.

COMPONENT MATERIALS

- Cap & Conduit Box** - Cast iron, Green enamel finish.
- Combination Hold-Down & Lift-Out Mechanism - Hold-Down Pipe** - Steel, corrosion resistant coating.
- Pitless Case** - Steel, black corrosion resistant coating.
- Spool** - Cast iron, lead free galvanized.
- Discharge Body** - Cast Iron, lead free galvanized.
- Conduit Seal & O-Rings** - Neoprene.
- Tank & Inlet Pipes** - Steel, black corrosion resistant coating.
- NOTE:** Inlet pipe & tank pipe tested to 200 P.S.I., spool discharge pressure tested to 300 P.S.I.

Specifications subject to change without notice

BB137-5(05-08)