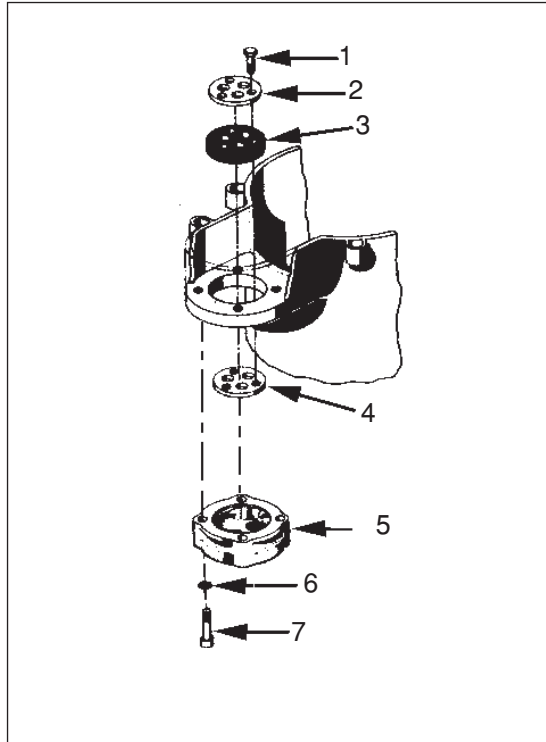


**CUSTOM INDUSTRIAL PITLESS UNITS
FOR SUBMERSIBLE PUMPS - 10" - 30"
OPTIONAL SEALED CONDUIT**



Key No.	Ordering Number	Description	Quantity
1	PS171	Hex head cap screw, 3/8-16NC x 1 1/2" L.	3
2	-----	Upper Compression Plate	1
3	-----	Cable seal gasket	1
4	-----	Lower compression plate	1
5	-----	Conduit seal adapter	1
6	UK355	Gasket	4
7	-----	Hex socket cap screw	4

NOTE: All of the above parts must be ordered by description and unit serial number. Please specify pump wire size.