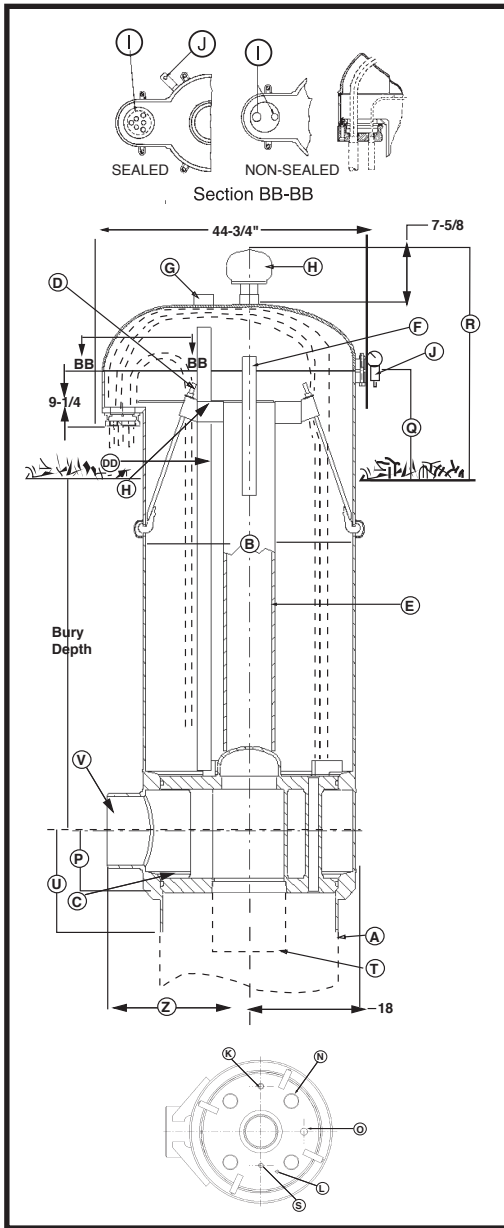




30" CUSTOM PITLESS SPECIFICATIONS



- A Pitless Unit to well casing connection:** Chamfered for butt weld.
- B Pitless Unit with Black Upper Case:** 35 in. I.D., 36 in. O.D.
- C Discharge Body minimum I.D. 29".**
- D Hold-Down Mechanism and Locator:** Locks spool in place and prevents lifting and turning during pump start-up. Four adjustable hooks on lift-out pipe hook into side of pitless case.
- DD Probe Tube** Standard 2 in. PVC Pipe.
- E Lift-Out Pipe:** 8 in. IPS with standard lift-out bail.
- F Lift-Out Bail:** Lift-out pipe and bail assembly designed for a 218,000 lb. load.
- G 2 -1/2 in. NPT Tapping.**
- H Well Vent:** Screws into a 2-1/2 in. NPT Tapping.
- CAP CABLE SEALS (SECTION BB-BB)**
- I Conduit Tapping:** 2 in. and 1 in. Std. Also available with single 2 in., 3 in., or 4 in. NPT. All tapping sizes available with or without electrical cable seal.
- J Depth Tester Block Tappings:** 1/4 in. NPT Std.
- K One 1 in. NPT Tapping ported to Discharge.**
- L Pressure zone tapping:** 3/8 in. NPT Std.
- N Motor Cable passages through spool - 3-7/16 in.**
- O 1-3/4 in.**
- P Dimension from center of Discharge Outlet to bottom of Discharge Body:** 17-7/16 in.
- Q Distance from ground level to top of the pitless case:** 12 in.
- R Distance from ground level to top of the vent cap:** 32-11/16 in. (Vent Height may be increased if necessary).
- S 3/4 in. NPT Tapping:** used for optional Water Sampler.
- | T SPOOL TO DROP PIPE THREAD SIZES: | 8 in. NPT | 10 in. NPT | 12 in. NPT |
|--|------------------|-------------------|-------------------|
| U Dimension from center of discharge outlet to bottom of Spool: | 10-1/2 in. | 10-1/2 in. | 10-1/2 in. |
- DISCHARGE CONNECTIONS AND SIZES:**
- | | | | |
|---|-------------|-------------|-------------|
| V For Butt Weld (IPS): | 8 in. I.D. | 10 in. I.D. | 12 in. I.D. |
| W For Flanged (A.S.A. Std. 150 lb.): | 8 in. I.D. | 10 in. I.D. | 12 in. I.D. |
| X For Threaded (NPT): | 8 in. I.D. | 10 in. I.D. | 12 in. I.D. |
| Y For Transition Sleeve (IPS): | 8 in. I.D. | 10 in. I.D. | 12 in. I.D. |
| Z Dimension from center of Well Casing to the end of Discharge Outlet. | | | |
| With [V] Butt Weld Discharge: | 24 in. | 24 in. | 24 in. |
| With [W] Flanged Discharge: | 28-1/16 in. | 28-1/16 in. | 28-9/16 in. |
| With [X] Threaded Discharge: | 28-1/16 in. | 29-1/16 in. | 29-1/16 in. |
| With [Y] Transition Sleeve: | 36-1/16 in. | 36-1/16 in. | 36-1/16 in. |

COMPONENT MATERIALS

- Well Vent** - cast iron, green enamel finish.
- Cap** - steel, green enamel finish.
- Conduit Box** - steel, corrosion resistant coating.
- Electrical Cable Seal** - cast iron, green enamel finish.
- Combination Hold-Down & Lift-Out Mechanism** - lead free galvanized.
- Hold-Down Pipe** - steel, corrosion resistant coating.
- Pitless Case** - steel, corrosion resistant coating.
- Discharge Body** - steel, lead free galvanized.
- Spool** - steel, lead free galvanized.
- Probe Tube** - 2" PVC

- NOTE:** Any combination between Drop Pipe and Discharge Outlet size is possible, if required.
- NOTE:** Maximum rated discharge pressure = 300 PSI

Note: Pitless units conform to the Recommended Standards for Water works, Great Lakes Upper Mississippi River Board of State Public Health & Environmental Managers and Water Systems Council PAS-97 (04) Standards.

BB119-30(05-08)

Baker Manufacturing Co., LLC/Monitor Division • Evansville, WI 53536
Phone: 800-356-5130 • Fax: 608-882-3777 • Website: bakermonitor.com