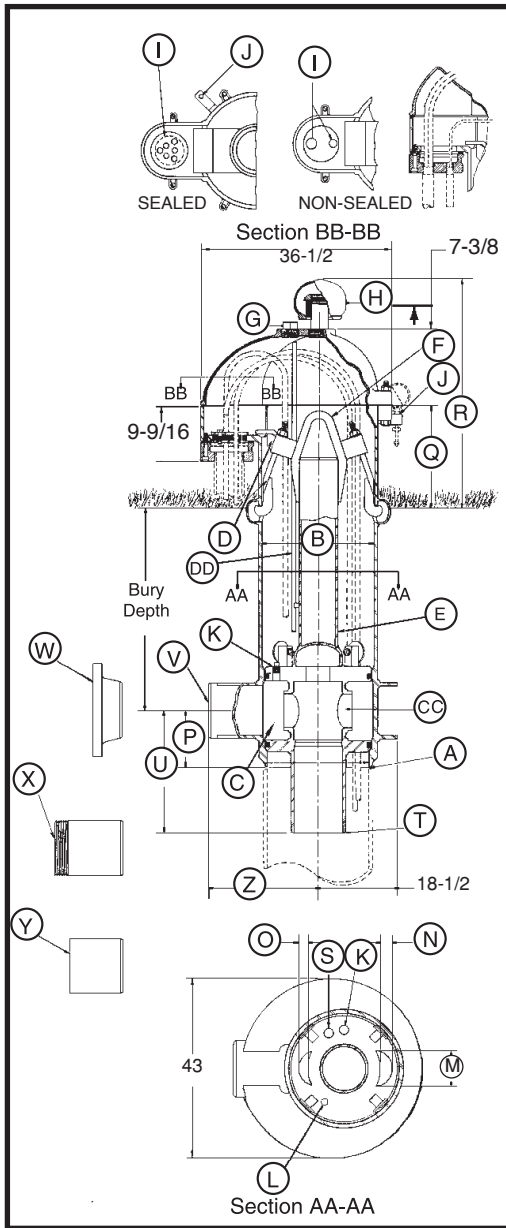


26" CUSTOM PITLESS SPECIFICATIONS



Note: Pitless units conform to the Recommended Standards for Water works, Great Lakes Upper Mississippi River Board of State Public Health & Environmental Managers and Water Systems Council PAS-97 (04) Standards.

- A Pitless Unit to well casing connection:** Chamfered for butt weld.
- B Pitless Unit with Black Upper Case:** 27 in. I.D., 28 in. O.D.
- C Discharge Body minimum I.D. 25".**
- D Hold-Down Mechanism:** Locks spool in place and prevents lifting and turning during pump start-up. Four adjustable hooks on lift-out pipe hook into side of pitless case.
- DD Probe Tube** Standard 1 in. PVC Pipe.
- E Lift-Out Pipe:** 8 in. IPS with standard lift-out bail.
- F Lift-Out Bail:** Lift-out pipe and bail assembly designed for a 218,000 lb. load.
- G 2 -1/2 in. NPT Tapping.**
- H Well Vent:** Screws into a 2-1/2 in. NPT Tapping.
- CAP CABLE SEALS (SECTION BB-BB)**
- I Conduit Tapping:** 2 in. and 1 in. Std. Also available with single 2 in., 3 in., or 4 in. NPT. All tapping sizes available with or without electrical cable seal.
- J Depth Tester Block Tappings:** 1/4 in. NPT Std.
- K Three 1 in. NPT Tappings ported to Drop Pipe.**
- L Pressure zone tapping:** 3/8 in. NPT Std.
- MOTOR CABLE PASSAGES THROUGH SPOOL (SECTION AA-AA)**
- M 7-3/16 in.**
- N 3-3/8 in.**
- O 2 in.**
- P Dimension from center of Discharge Outlet to bottom of Discharge Body:** 17-7/16 in.
- Q Distance from ground level to top of the pitless case:** 12 in.
- R Distance from ground level to top of the vent cap:** 30-13/16 in. (Vent Height may be increased if necessary).
- S 3/4 in. NPT Tapping:** used for optional Water Sampler.
- T SPOOL TO DROP PIPE THREAD SIZES:**

| | 8 in. NPT | 10 in. NPT | 12 in. NPT |
|---|--------------|--------------|--------------|
| U Dimension from center of discharge outlet to bottom of Spool: | 18-13/16 in. | 20-15/16 in. | 22-15/16 in. |
- DISCHARGE CONNECTIONS AND SIZES:**

| | 8 in. I.D. | 10 in. I.D. | 12 in. I.D. |
|--------------------------------------|------------|-------------|-------------|
| V For Butt Weld (IPS): | 8 in. I.D. | 10 in. I.D. | 12 in. I.D. |
| W For Flanged (A.S.A. Std. 150 lb.): | 8 in. I.D. | 10 in. I.D. | 12 in. I.D. |
| X For Threaded (NPT): | 8 in. I.D. | 10 in. I.D. | 12 in. I.D. |
| Y For Transition Sleeve (IPS): | 8 in. I.D. | 10 in. I.D. | 12 in. I.D. |
- Z Dimension from center of Well Casing to the end of Discharge Outlet:**

| | | | |
|-------------------------------|-------------|-------------|-------------|
| With [V] Butt Weld Discharge: | 34-1/4 in. | 34-1/4 in. | 26-1/4 in. |
| With [W] Flanged Discharge: | 38-5/16 in. | 38-5/16 in. | 30-3/4 in. |
| With [X] Threaded Discharge: | 38-5/16 in. | 39-5/16 in. | 33-5/16 in. |
| With [Y] Transition Sleeve: | 46-1/4 in. | 46-1/4 in. | 38-1/4 in. |
- CC SPOOL ASSEMBLY - WITHOUT CHECK VALVES -**

| | | | |
|---|----------------|----------------|----------------|
| Area of Water Passage(s): | 120.26 sq. in. | 120.26 sq. in. | 120.26 sq. in. |
| Percent area of water passages to area of drop pipe.... | 240% | 152% | 106% |

COMPONENT MATERIALS

- Well Vent** - cast iron, green enamel finish.
- Cap** - cast iron, green enamel finish.
- Conduit Box** - steel, corrosion resistant coating.
- Electrical Cable Seal** - cast iron, green enamel finish.
- Combination Hold-Down & Lift-Out Mechanism** - lead free galvanized.
- Hold-Down Pipe** - steel, corrosion resistant coating.
- Pitless Case** - steel, corrosion resistant coating.
- Discharge Body** - steel, lead free galvanized.
- Spool** - steel, lead free galvanized.
- Probe Tube** - 1" PVC

NOTE: Any combination between Drop Pipe and Discharge Outlet size is possible, if required.

NOTE: Maximum rated discharge pressure = 300 PSI

BB118-26(05-08)