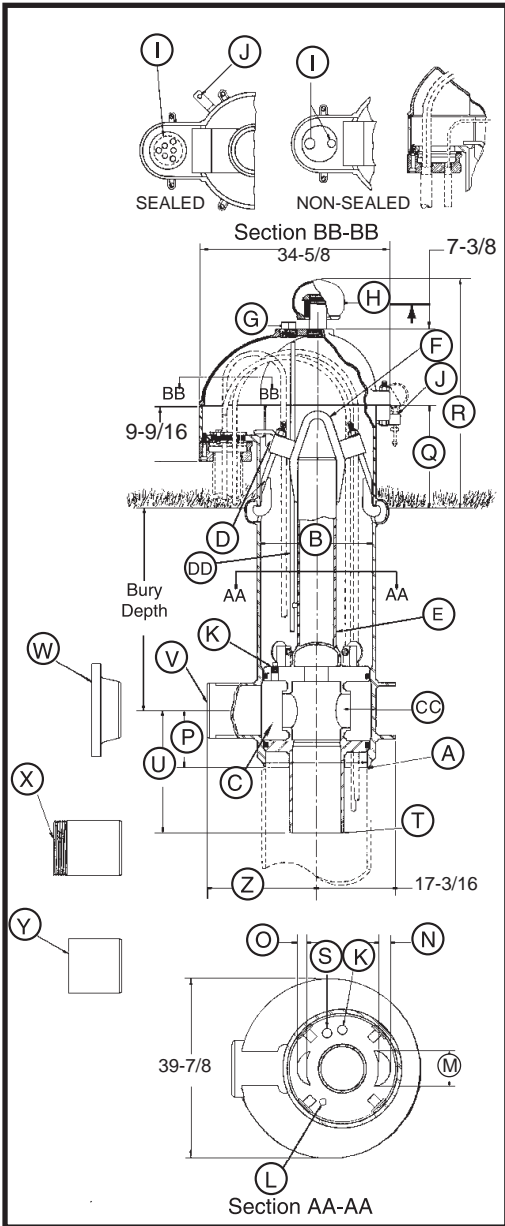




24" CUSTOM PITLESS SPECIFICATIONS



- A Pitless Unit to well casing connection:** Chamfered for butt weld.
- B Pitless Unit with Black Upper Case:** 25 in. I.D., 26 in. O.D.
- C Discharge Body minimum I.D. 23".**
- D Hold-Down Mechanism:** Locks spool in place and prevents lifting and turning during pump start-up. Four adjustable hooks on lift-out pipe hook into side of pitless case.
- DD Probe Tube Standard** 1 in. PVC Pipe.
- E Lift-Out Pipe:** 8 in. IPS with standard lift-out bail.
- F Lift-Out Bail:** Lift-out pipe and bail assembly designed for a 218,000 lb. load.
- G 2 - 1/2 in. NPT Tapping.**
- H Well Vent:** Screws into a 2-1/2 in. NPT Tapping.
- I Conduit Tapping:** 2 in. and 1 in. Std. Also available with single 2 in., 3 in., or 4 in. NPT. All tapping sizes available with or without electrical cable seal.
- J Depth Tester Block Tappings:** 1/4 in. NPT Std.
- K Three 1 in. NPT Tappings ported to Drop Pipe.**
- L Pressure zone tapping:** 3/8 in. NPT Std.
- MOTOR CABLE PASSAGES THROUGH SPOOL (SECTION AA-AA)**
- M 7-1/16 in.**
- N 3-7/16 in.**
- O 2-1/8 in.**
- P Dimension from center of Discharge Outlet to bottom of Discharge Body:** 17-1/2 in.
- Q Distance from ground level to top of the pitless case:** 12 in.
- R Distance from ground level to top of the vent cap:** 29-7/16 in. (Vent Height may be increased if necessary).
- S 3/4 in. NPT Tapping:** used for optional Water Sampler.
- T SPOOL TO DROP PIPE THREAD SIZES:**

	<u>8 in. NPT</u>	<u>10 in. NPT</u>	<u>12 in. NPT</u>
U Dimension from center of discharge outlet to bottom of Spool:	18-13/16 in.	20-15/16 in.	22-15/16 in.

- DISCHARGE CONNECTIONS AND SIZES:**

	8 in. I.D.	10 in. I.D.	12 in. I.D.
V For Butt Weld (IPS):	8 in. I.D.	10 in. I.D.	12 in. I.D.
W For Flanged (A.S.A. Std. 150 lb.):	8 in. I.D.	10 in. I.D.	12 in. I.D.
X For Threaded (NPT):	8 in. I.D.	10 in. I.D.	12 in. I.D.
Y For Transition Sleeve (IPS):	8 in. I.D.	10 in. I.D.	12 in. I.D.

- Z Dimension from center of Well Casing to the end of Discharge Outlet.**

With [V] Butt Weld Discharge:	32-1/2 in.	32-1/2 in.	24-7/16 in.
With [W] Flanged Discharge:	36-1/2 in.	36-1/2 in.	29 in.
With [X] Threaded Discharge:	36-1/2 in.	37-1/2 in.	31-1/2 in.
With [Y] Transition Sleeve:	44-1/2 in.	44-1/2 in.	36-1/2 in.

- CC SPOOL ASSEMBLY - WITHOUT CHECK VALVES -**

Area of Water Passage(s):	120.26 sq. in.	120.26 sq. in.	120.26 sq. in.
Percent area of water passages to area of drop pipe	240%	152%	106%

COMPONENT MATERIALS

- Well Vent** - cast iron, green enamel finish.
- Cap** - cast iron, green enamel finish.
- Conduit Box** - steel, corrosion resistant coating.
- Electrical Cable Seal** - cast iron, green enamel finish.
- Combination Hold-Down & Lift-Out Mechanism** - lead free galvanized.
- Hold-Down Pipe** - steel, corrosion resistant coating.
- Pitless Case** - steel, corrosion resistant coating.
- Discharge Body** - steel, lead free galvanized.
- Spool** - steel, lead free galvanized.
- Probe Tube** - 1" PVC

NOTE: Any combination between Drop Pipe and Discharge Outlet size is possible, if required.

NOTE: Maximum rated discharge pressure = 300 PSI

Note: Pitless units conform to the Recommended Standards for Water works, Great Lakes Upper Mississippi River Board of State Public Health & Environmental Managers and Water Systems Council PAS-97 (04) Standards.

BB117-24(01-07)