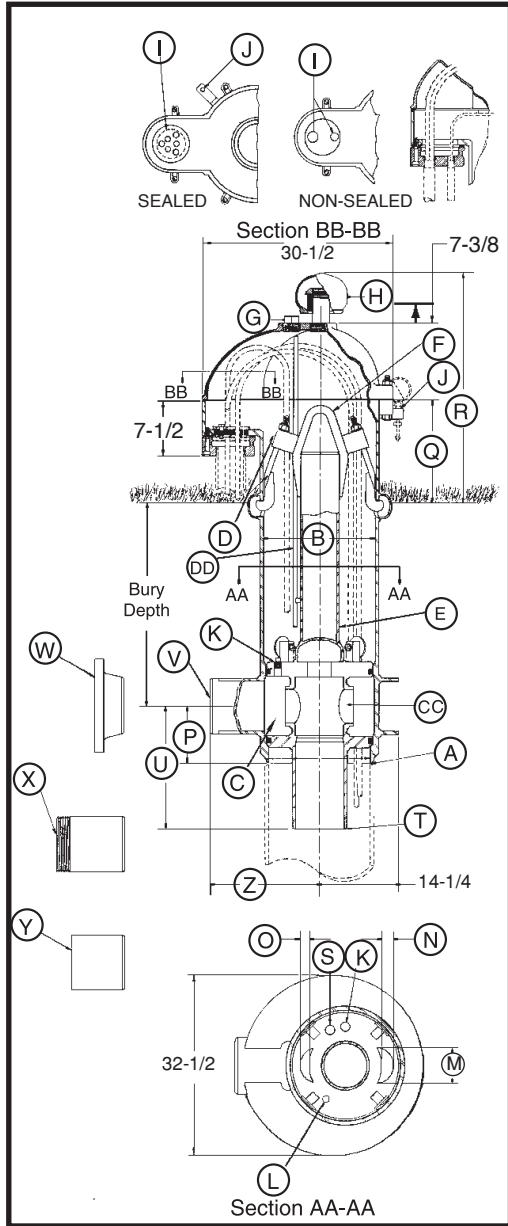




# 20" CUSTOM PITLESS SPECIFICATIONS



**Note:** Pitless units conform to the Recommended Standards for Water works, Great Lakes Upper Mississippi River Board of State Public Health & Environmental Managers and Water Systems Council PAS-97 (04) Standards.

- A Pitless Unit to well casing connection:** Chamfered for butt weld.
- B Pitless Unit with Black Upper Case:** 21 in. I.D., 22 in. O.D.
- C Discharge Body minimum I.D.:** 19"
- D Hold-Down Mechanism:** Locks spool in place and prevents lifting and turning during pump start-up. Four adjustable hooks on lift-out pipe hook into side of pitless case.
- DD Probe Tube Standard** 1 in. PVC Pipe.
- E Lift-Out Pipe:** 6 in. IPS with standard lift-out bail.
- F Lift-Out Bail:** Lift-out pipe and bail assembly designed for a 142,000 lb. load.
- G 2 in. NPT Tapping.**
- H Well Vent:** Screws into a 2-1/2 in. NPT Tapping.
- CAP CABLE SEALS (SECTION BB-BB)**
- I Conduit Tapping:** 2 in. and 1 in. Std. Also available with single 2 in., 3 in., or 4 in. NPT. All tapping sizes available with or without electrical cable seal.
- J Depth Tester Block Tappings:** 1/4 in. NPT Std.
- K Three 1 in. NPT Tappings ported to Drop Pipe.**
- L Pressure zone tapping:** 3/8 in. NPT Std.
- MOTOR CABLE PASSAGES THROUGH SPOOL (SECTION AA-AA)**
- M 6-3/4 in.**
- N 3-3/8 in.**
- O 2 in.**
- P Dimension from center of Discharge Outlet to bottom of Discharge Body:** 13-3/4 in.
- Q Distance from ground level to top of the pitless case:** 12 in.
- R Distance from ground level to top of the vent cap:** 28-1/4 in. (Vent Height may be increased if necessary).
- S 3/4 in. NPT Tapping:** used for optional Water Sampler.
- T SPOOL TO DROP PIPE THREAD SIZES:**

	6 in. NPT	8 in. NPT	10 in. NPT
<b>U Dimension from center of discharge outlet to bottom of Spool:</b>	24-9/16 in.	24-9/16 in.	19-11/16 in.

- DISCHARGE CONNECTIONS AND SIZES:**
- V For Butt Weld (IPS):** 6 in. I.D. 8 in. I.D. 10 in. I.D.
- W For Flanged (ASA Std. 150 lb.):** 6 in. I.D. 8 in. I.D. 10 in. I.D.
- X For Threaded (NPT):** 6 in. I.D. 8 in. I.D. 10 in. I.D.
- Y For Transition Sleeve (IPS):** 6 in. I.D. 8 in. I.D. 10 in. I.D.
- Z Dimension from center of Well Casing to the end of Discharge Outlet.**

With [V] Butt Weld Discharge:	26-1/2 in.	26-1/2 in.	19-1/2 in.
With [W] Flanged Discharge:	30 in.	30-1/2 in.	23-1/2 in.
With [X] Threaded Discharge:	30-9/16 in.	30-9/16 in.	31-9/16 in.
With [Y] Transition Sleeve:	38-9/16 in.	38-9/16 in.	31-1/2 in.

- CC SPOOL ASSEMBLY - WITHOUT CHECK VALVES -**

Area of Water Passage(s):	33.18 sq. in.	66.36 sq. in.	66.36 sq. in.
Percent area of water passages to area of drop pipe	115%	132%	85%

## COMPONENT MATERIALS

- Well Vent** - cast iron, green enamel finish.
- Cap** - cast iron, green enamel finish.
- Conduit Box** - steel, corrosion resistant coating.
- Electrical Cable Seal** - cast iron, green enamel finish.
- Combination Hold-Down & Lift-Out Mechanism** - lead free galvanized.
- Hold-Down Pipe** - steel, corrosion resistant coating.
- Pitless Case** - steel, corrosion resistant coating.
- Discharge Body** - steel, lead free galvanized.
- Spool** - steel, lead free galvanized.
- Probe Tube** - 1" PVC

**NOTE:** Any combination between Drop Pipe and Discharge Outlet size is possible, if required.

**NOTE:** Maximum rated discharge pressure = 300 PSI

BB116-20(05-08)