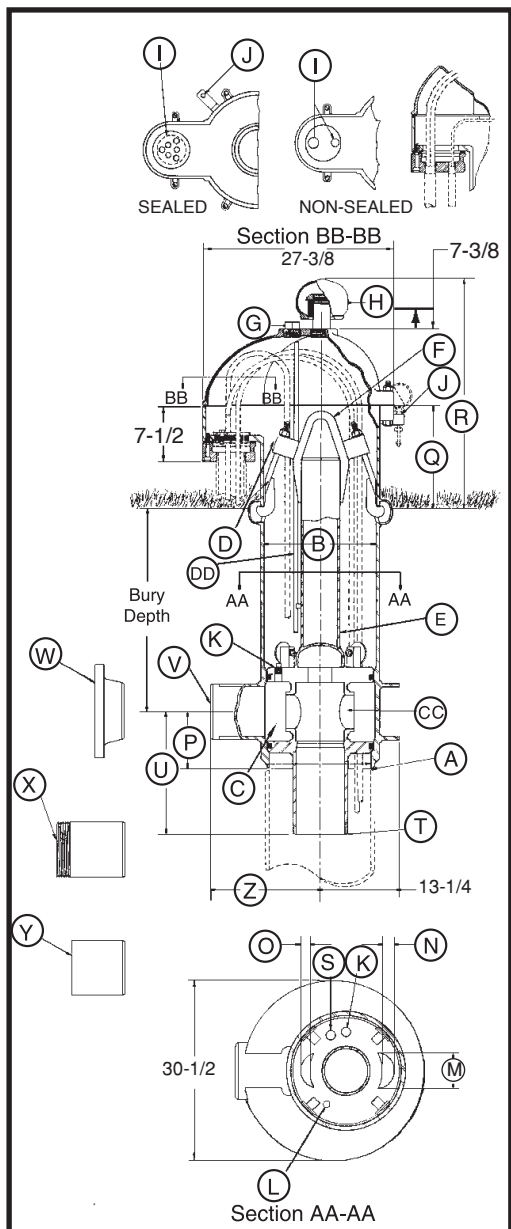




18" CUSTOM PITLESS SPECIFICATIONS



Note: Pitless units conform to the Recommended Standards for Water works, Great Lakes Upper Mississippi River Board of State Public Health & Environmental Managers and Water Systems Council PAS-97 (04) Standards.

- A Pitless Unit to well casing connection: Chamfered for butt weld.
- B Pitless Unit with Black Upper Case: 19-1/4 in. I.D., 20 in. O.D.
- C Discharge Body minimum I.D. 17-1/4": Large enough to permit insertion of 18 in. O.D. tubing to this point for well servicing.
- D Hold-Down Mechanism: Locks spool in place and prevents lifting and turning during pump start-up. Four adjustable hooks on lift-out pipe hook into side of pitless case.
- DD Probe Tube Standard 1 in. PVC Pipe.
- E Lift-Out Pipe: 6 in. NPT with standard lift-out bail.
- F Lift-Out Bail: Lift-out pipe and bail assembly designed for a 142,000 lb. load.
- G 2 in. NPT Tapping.
- H Well Vent: Screws into a 2-1/2 in. NPT Tapping.
- CAP CABLE SEALS (SECTION BB-BB)**
- I Conduit Tapping: 2 in. and 1 in. Std. Also available with single 2 in., 3 in., or 4 in. NPT. All tapping sizes available with or without electrical cable seal.
- J Depth Tester Block Tappings: 1/4 in. NPT Std.
- K Two 1 in. NPT Tappings ported to Drop Pipe.
- L Pressure zone tapping: 3/8 in. NPT Std.
- MOTOR CABLE PASSAGES THROUGH SPOOL (SECTION AA-AA)**
- M 6 in.
- N 2-5/8 in.
- O 1-1/2 in.
- P Dimension from center of Discharge Outlet to bottom of Discharge Body: 12-13/16 in.
- Q Distance from ground level to top of the pitless case: 12 in.
- R Distance from ground level to top of the vent cap: 28-1/4 in. (Vent Height may be increased if necessary).
- S 3/4 in. NPT Tapping: used for optional Water Sampler.
- T **SPOOL TO DROP PIPE THREAD SIZES:**

	6 in. NPT	8 in. NPT	10 in. NPT
U Dimension from center of discharge outlet to bottom of Spool:.....	24-1/16 in.	24-1/16 in.	19-3/32 in.

- DISCHARGE CONNECTIONS AND SIZES:**

	6 in. I.D.	8 in. I.D.	10 in. I.D.
V For Butt Weld (IPS):.....	6 in. I.D.	8 in. I.D.	10 in. I.D.
W For Flanged (A.S.A. Std. 150 lb.):.....	6 in. I.D.	8 in. I.D.	10 in. I.D.
X For Threaded (NPT):.....	6 in. I.D.	8 in. I.D.	10 in. I.D.
Y For Transition Sleeve (IPS):.....	6 in. I.D.	8 in. I.D.	10 in. I.D.

- Z Dimension from center of Well Casing to the end of Discharge Outlet.

With [V] Butt Weld Discharge:.....	25-1/2 in.	25-1/2 in.	18-1/2 in.
With [W] Flanged Discharge:.....	29 in.	29-1/2 in.	22-1/2 in.
With [X] Threaded Discharge:.....	29-1/2 in.	29-1/2 in.	23-5/8 in.
With [Y] Transition Sleeve:.....	37-9/16 in.	37-9/16 in.	30-9/16 in.

- CC **SPOOL ASSEMBLY - WITHOUT CHECK VALVES -**

Area of Water Passage(s):.....	33.18 sq. in.	66.36 sq. in.	66.36 sq. in.
Percent area of water passages to area of drop pipe	115%	132%	85%

COMPONENT MATERIALS

- Well Vent - cast iron, green enamel finish.
- Cap - cast iron, green enamel finish.
- Conduit Box - steel, corrosion resistant coating.
- Electrical Cable Seal - cast iron, green enamel finish.
- Combination Hold-Down & Lift-Out Mechanism - lead free galvanized.
- Hold-Down Pipe - steel, corrosion resistant coating.
- Pitless Case - steel, corrosion resistant coating.
- Discharge Body - steel, lead free galvanized.
- Spool - steel, lead free galvanized.
- Probe Tube - 1" PVC

NOTE: Any combination between Drop Pipe and Discharge Outlet size is possible, if required.

NOTE: Maximum rated discharge pressure = 300 PSI

BB115-18(05-08)