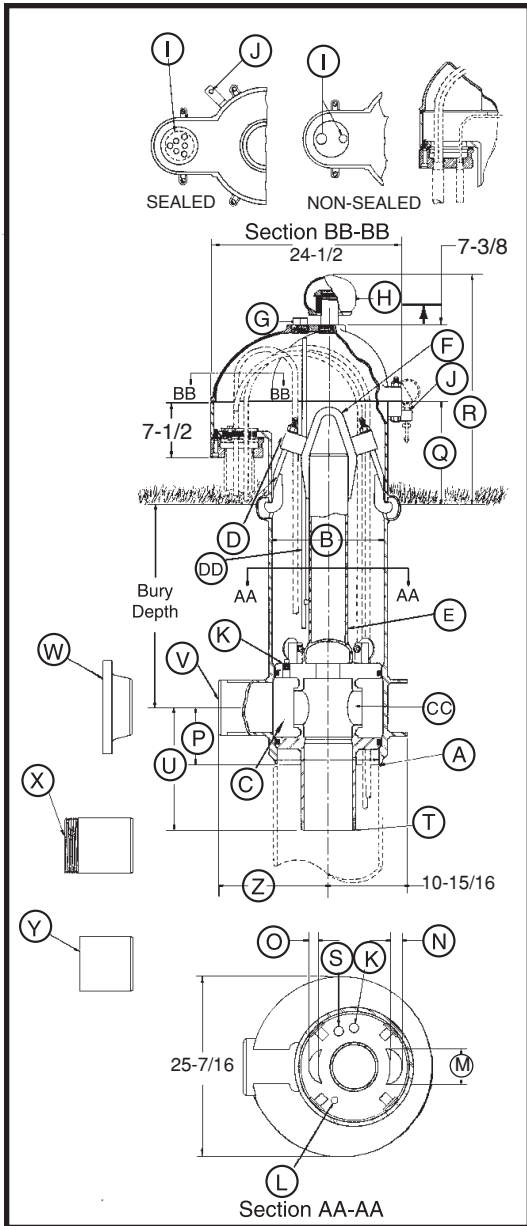




# 14" CUSTOM PITLESS SPECIFICATIONS



**Note: Pitless units conform to the Recommended Standards for Water works, Great Lakes Upper Mississippi River Board of State Public Health & Environmental Managers and Water Systems Council PAS-97 (04) Standards.**

- A Pitless Unit to well casing connection:** Chamfered for butt weld.
- B Pitless Unit with Black Upper Case:** 15-1/4 in. I.D., 16 in. O.D.
- C Discharge Body minimum I.D. 13-1/4":** Large enough to permit insertion of 14 in. O.D. tubing to this point for well servicing.
- D Hold-Down Mechanism:** Locks spool in place and prevents lifting and turning during pump start-up. Two adjustable hooks on lift-out pipe hook into side of pitless case.
- DD Probe Tube Standard** 1 in. PVC Pipe.
- E Lift-Out Pipe:** 5 in. NPT with standard lift-out bail.
- F Lift-Out Bail:** Lift-out pipe and bail assembly designed for a 110,000 lb. load.
- G 2 in. NPT Tapping.**
- H Well Vent:** Screws into a 2-1/2 in. NPT Tapping.
- CAP CABLE SEALS (SECTION BB-BB)**
- I Conduit Tapping:** 2 in. and 1 in. Std. Also available with single 2 in., 3 in., or 4 in. NPT. All tapping sizes available with or without electrical cable seal.
- J Depth Tester Block Tappings:** 1/4 in. NPT Std.
- K Two 1 in. NPT Tappings ported to Drop Pipe.**
- L Pressure zone tapping:** 3/8 in. NPT Std.
- MOTOR CABLE PASSAGES THROUGH SPOOL (SECTION AA-AA)**
- M 4 in.**
- N 1-7/8 in.**
- O 1-1/4 in.**
- P Dimension from center of Discharge Outlet to bottom of Discharge Body:** 11-1/16 in.
- Q Distance from ground level to top of the pitless case:** 12 in.
- R Distance from ground level to top of the vent cap:** 28-15/16 in. (Vent Height may be increased if necessary).
- S 3/4 in. NPT Tapping:** used for optional Water Sampler.

<b>T SPOOL TO DROP PIPE THREAD SIZES:</b>	<b>5 in. NPT</b>	<b>6 in. NPT</b>	<b>8 in. NPT</b>
<b>U Dimension from center of discharge outlet to bottom of Spool:</b>	16-3/16 in.	21-13/16 in.	15-13/16 in.
<b>DISCHARGE CONNECTIONS AND SIZES:</b>			
<b>V For Butt Weld (IPS):</b>	5 in. I.D.	6 in. I.D.	8 in. I.D.
<b>W For Flanged (A.S.A. Std. 150 lb.):</b>	5 in. I.D.	6 in. I.D.	8 in. I.D.
<b>X For Threaded (NPT):</b>	5 in. I.D.	6 in. I.D.	8 in. I.D.
<b>Y For Transition Sleeve (IPS):</b>	5 in. I.D.	6 in. I.D.	8 in. I.D.
<b>Z Dimension from center of Well Casing to the end of Discharge Outlet.</b>			
With <b>[V]</b> Butt Weld Discharge:	20-9/16 in.	20-9/16 in.	14-1/2 in.
With <b>[W]</b> Flanged Discharge:	24-1/16 in.	24-1/16 in.	18-1/2 in.
With <b>[X]</b> Threaded Discharge:	23-9/16 in.	24-9/16 in.	18-1/2 in.
With <b>[Y]</b> Transition Sleeve:	Not Available	32-9/16 in.	26-1/2 in.
<b>CC SPOOL ASSEMBLY - WITHOUT CHECK VALVES -</b>			
Area of Water Passage(s):	19.6 sq. in.	39.2 sq. in.	39.2 sq. in.
Percent area of water passages to area of drop pipe	100%	138%	78.2%

## COMPONENT MATERIALS

- Well Vent** - cast iron, green enamel finish.
- Cap** - cast iron, green enamel finish.
- Conduit Box** - steel, corrosion resistant coating.
- Electrical Cable Seal** - cast iron, green enamel finish.
- Combination Hold-Down & Lift-Out Mechanism** - lead free galvanized.
- Hold-Down Pipe** - steel, corrosion resistant coating.
- Pitless Case** - steel, corrosion resistant coating.
- Discharge Body** - steel, lead free galvanized.
- Spool** - steel, lead free galvanized.
- Probe Tube** - 1" PVC

**NOTE:** Any combination between Drop Pipe and Discharge Outlet size is possible, if required.

**NOTE:** Maximum rated discharge pressure = 300 PSI

BB113-14(05-08)

Baker Manufacturing Co., LLC/Monitor Division • Evansville, WI 53536  
 Phone: 800-356-5130 • Fax: 608-882-3777 • Website: bakermonitor.com