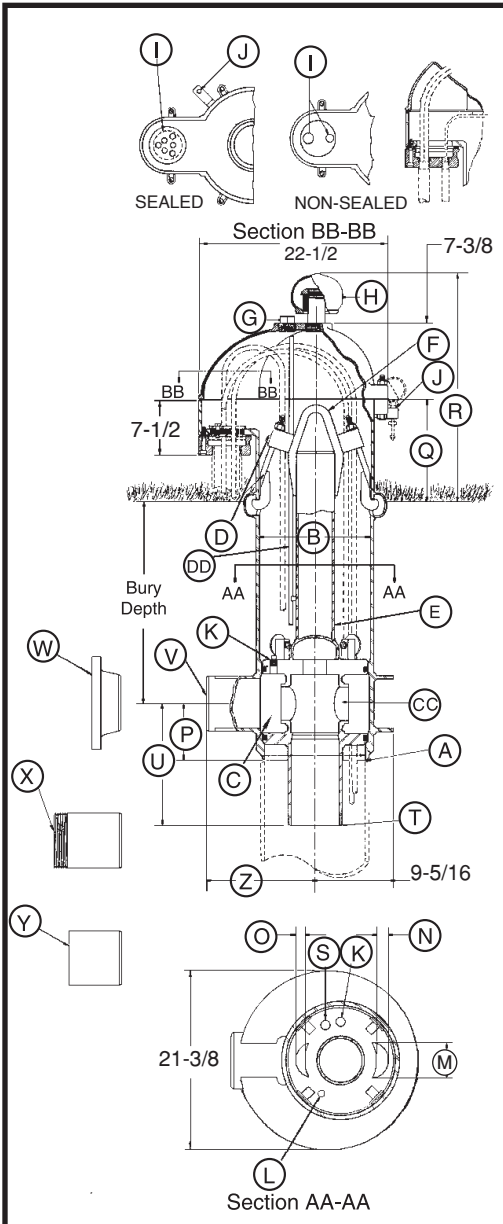




10" CUSTOM PITLESS SPECIFICATIONS



Note: Pitless units conform to the Recommended Standards for Water works, Great Lakes Upper Mississippi River Board of State Public Health & Environmental Managers and Water Systems Council PAS-97 (04) Standards.

- A Pitless Unit to well casing connection:** Chamfered for butt weld.
- B Pitless Unit with Black Upper Case:** 13-1/8 in. I.D., 14 in. O.D.
- C Discharge Body minimum I.D. 10":** Large enough to permit insertion of 10 in. pipe during well servicing.
- D Hold-Down Mechanism:** Locks spool in place and prevents lifting and turning during pump start-up. Two adjustable hooks on lift-out pipe hook into side of pitless case.
- DD** Probe Tube is Standard 1 in. PVC Pipe.
- E Lift-Out Pipe:** 4 in. NPT with standard lift-out bail.
- F Lift-Out Bail:** Lift-out pipe and bail assembly designed for a 68,000 lb. load.
- G** 2 in. NPT Tapping.
- H Well Vent:** Screws into a 2-1/2 in. NPT Tapping.

CAP CABLE SEALS (SECTION BB-BB)

- I Conduit Tapping:** 2 in. and 1 in. Std. Also available with single 2 in., 3 in., or 4 in. NPT. All tapping sizes available with or without electrical cable seal.
- J Depth Tester Block Tappings:** 1/4 in. NPT Std.
- K** 1 in. NPT Tapping ported to Drop Pipe.
- L Pressure zone tapping:** 3/8 in. NPT Std.

MOTOR CABLE PASSAGES THROUGH SPOOL (SECTION AA-AA)

M	4 in.		
N	1-1/2 in.		
O	1 in.		
P	Dimension from center of Discharge Outlet to bottom of Discharge Body:	15-3/4 in.	
Q	Distance from ground level to top of the pitless case:	12 in.	
R	Distance from ground level to top of the vent cap:	28-1/2 in.	
	(Vent height may be increased if necessary).		
S	3/4 in. NPT Tapping: used for optional Water Sampler.		
T	SPOOL TO DROP PIPE THREAD SIZES:	4 IN. NPT	5 IN. NPT
U	Dimension from center of discharge outlet to bottom of Spool:	13-7/16 in.	14-7/16 in.
			14-1/2 in.
	DISCHARGE CONNECTIONS AND SIZES:		
V	For Butt Weld (IPS):	4 in. I.D.	5 in. I.D.
W	For Flanged (A.S.A. Std. 150 lb.):	4 in. I.D.	5 in. I.D.
X	For Threaded (NPT):	4 in. I.D.	5 in. I.D.
Y	For Transition Sleeve (IPS):	4 in. I.D.	Not Available
Z	Dimension from center of Well Casing to the end of Discharge Outlet:		
	With [V] Butt Weld Discharge:	18-1/2 in.	18-1/2 in.
	With [W] Flanged Discharge:	21-1/2 in.	22 in.
	With [X] Threaded Discharge:	21-7/16 in.	21-7/16 in.
	With [Y] Transition Sleeve:	30-1/2 in.	Not Available
			24-15/16 in.
CC	SPOOL ASSEMBLY - WITHOUT CHECK VALVES -		
	Area of Water Passage(s):	25.12 sq. in.	25.12 sq. in.
	Percent area of water passages to area of drop pipe	195%	125%
			87%

COMPONENT MATERIALS

- Well Vent** - cast iron, green enamel finish.
- Cap** - cast iron, green enamel finish.
- Conduit Box** - steel, corrosion resistant coating.
- Electrical Cable Seal** - cast iron, green enamel finish.
- Combination Hold-Down & Lift-Out Mechanism** - lead free galvanized.
- Hold-Down Pipe** - steel, corrosion resistant coating.
- Pitless Case** - steel, corrosion resistant coating.
- Discharge Body** - steel, lead free galvanized.
- Spool** - steel, lead free galvanized.
- Probe Tube** - 1" PVC

NOTE: Any combination between Drop Pipe and Discharge Outlet size is possible, if required.

NOTE: Maximum rated discharge pressure = 300 PSI

BB111-10(05-08)